

## MDTE Series

Wire Wound Molded SMD Power Inductors  
Size 5020

### FEATURES

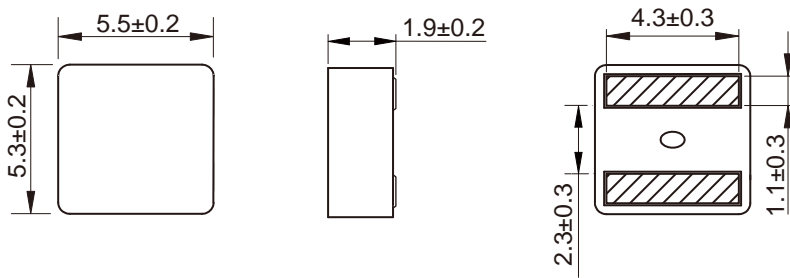
- 
- 
- 
- 
- 
- 
- 

°C

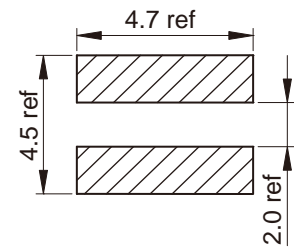
### APPLICATION

- 
- 

Dimensions: [mm]



Land Pattern: [mm]



Electrical Properties:

Tolerance

---



---



---



---



---



---



---

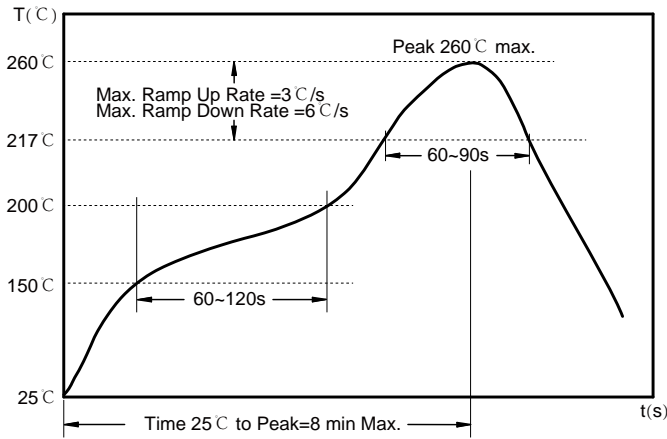


---

Saturation Current will cause L to drop approximately 30%

Temperature Rise Current: The actual value of DC current when the temperature rise is  $\Delta T = 40^\circ\text{C}$

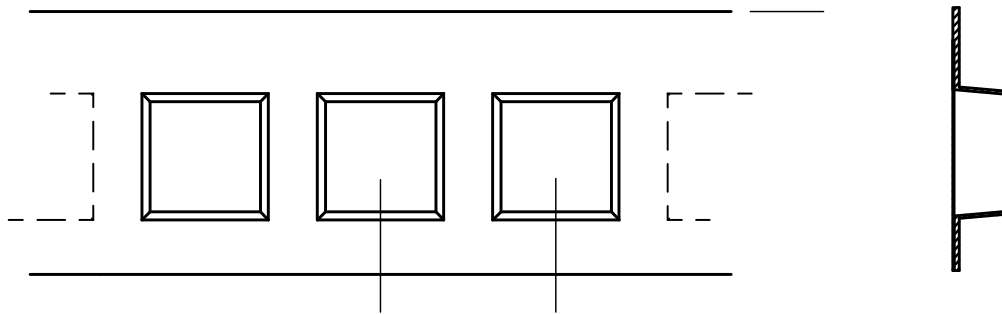
## Soldering Reflow:



Preheat condition: 150 ~200°C / 60~120 sec.  
 Allowed time above 217°C: 60~90 sec.  
 Max temperature: 260°C.  
 Max time at max temperature: 10 sec.  
 Allowed Reflow time: 2x max.

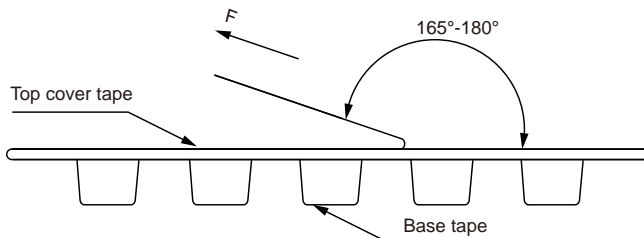
## Packaging Information:

### Tape Dimension:



Series	A0 (mm)	B0 (mm)	D (mm)	P0 (mm)	P1 (mm)	W (mm)	K0 (mm)	E (mm)	T (mm)
MDTE5020	6.0± 0.1	5.7± 0.1	1.5± 0.1	4.0± 0.1	8.0± 0.1	12.0± 0.3	2.3± 0.1	1.75± 0.1	0.35± 0.05

### Peel force of top cover tape:

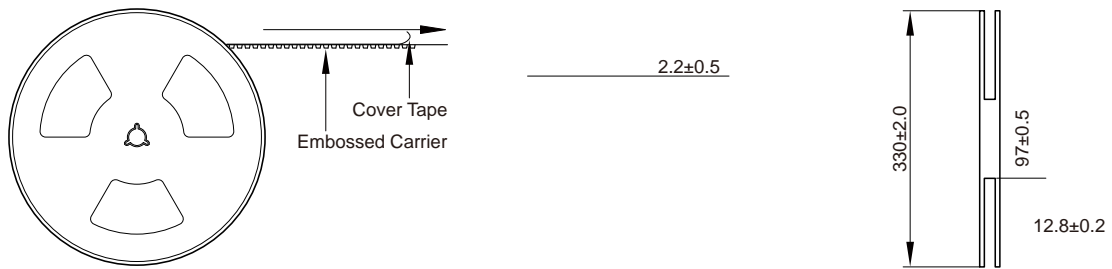


The peel force of top cover tape shall be between 0.1 to 1.3 N

### Product Marking:

Marking	Printing Inductance)
---------	----------------------

Reel Dimension: [mm]



Packaging Quantity:



Cautions and Warnings:

Storage Conditions:

- 
- 
- 
- 

Operation Instructions:

- 
- 
- 
-