

FBHA Series

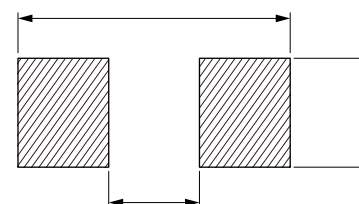
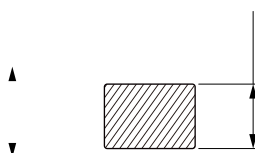
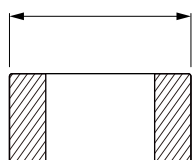


FEATURES

- Noise reduction solution for power line.
- Compared to the FBA series, has low direct current resistance for compatibility with large currents, optimal for low power consumption.
- Various frequency characteristics with 2 materials of different features for countermeasures against everything from general signals to high-speed signals.
- Performs well even in signal lines where low direct current resistance is required.
- AEC-Q200 qualified.
- Operating temperature: -55 to +150 °C (including self-temperature rise)
- Quantity: 4000PCS

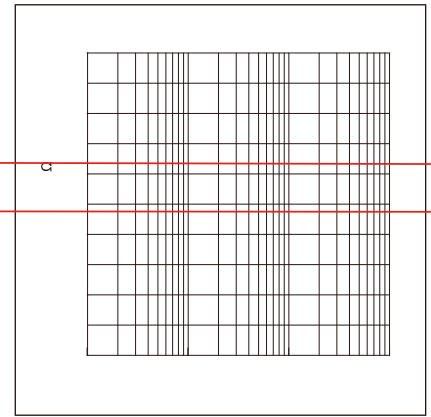
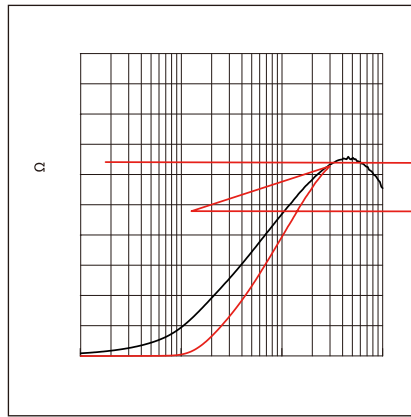
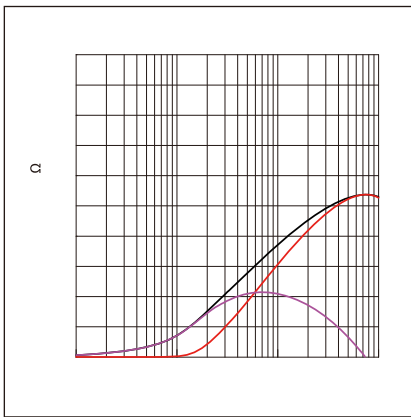
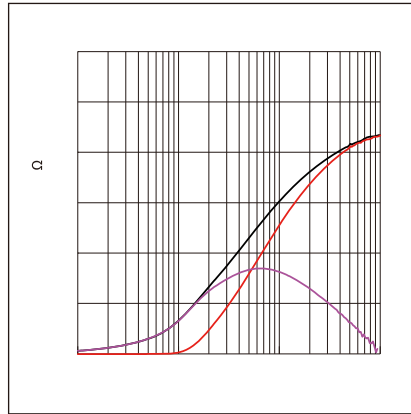
APPLICATION

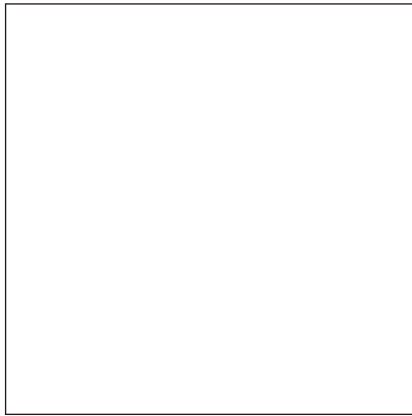
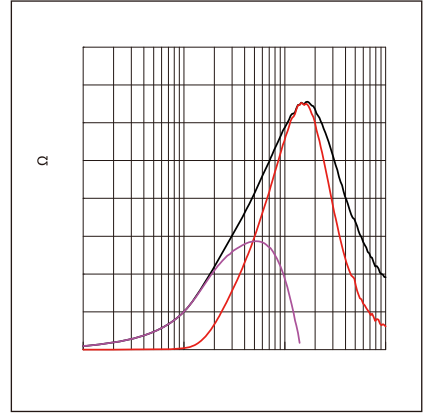
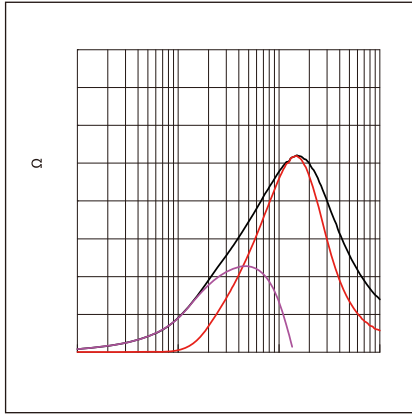
- Power line filter for body controls, and car multimedia etc.

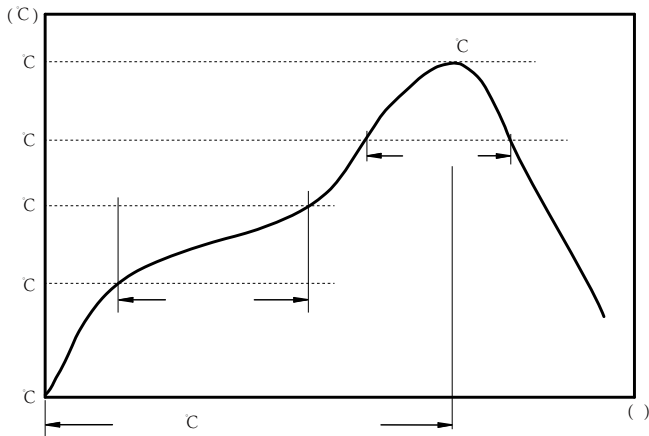


| Part No | Impedance @ 100MHz (Ω) | Tolerance | DC Resistance (Ω) | Temperature Rise Current (mA) |
|-------------------|------------------------|-----------|-------------------|-------------------------------|
| FBHA0805-220-602R | 22 | ±25% | 0.01 | 6000 |
| FBHA0805-300-302R | 30 | ±25% | 0.04 | 3000 |
| FBHA0805-300-602R | 30 | ±25% | 0.01 | 6000 |
| FBHA0805-800-302R | 80 | ±25% | 0.04 | 3000 |
| FBHA0805-101-102R | 100 | ±25% | 0.15 | 1000 |
| FBHA0805-101-502R | 100 | ±25% | 0.02 | 5000 |
| FBHA0805-121-202R | 120 | ±25% | 0.10 | 2000 |
| FBHA0805-121-302R | 120 | ±25% | 0.04 | 3000 |
| FBHA0805-151-202R | 150 | ±25% | 0.10 | 2000 |
| FBHA0805-221-202R | 220 | ±25% | 0.10 | 2000 |
| FBHA0805-221-302R | 220 | ±25% | 0.04 | 3000 |
| FBHA0805-301-102R | 300 | ±25% | 0.20 | 1000 |
| FBHA0805-331-252R | 330 | ±25% | 0.05 | 2500 |
| FBHA0805-471-102R | 470 | ±25% | 0.20 | 1000 |
| FBHA0805-601-102R | 600 | ±25% | 0.20 | 1000 |
| FBHA0805-601-202R | 600 | ±25% | 0.10 | 2000 |
| FBHA0805-102-102R | 1000 | ±25% | 0.20 | 1000 |
| FBHA0805-102-152R | 1000 | ±25% | 0.15 | 1500 |

△

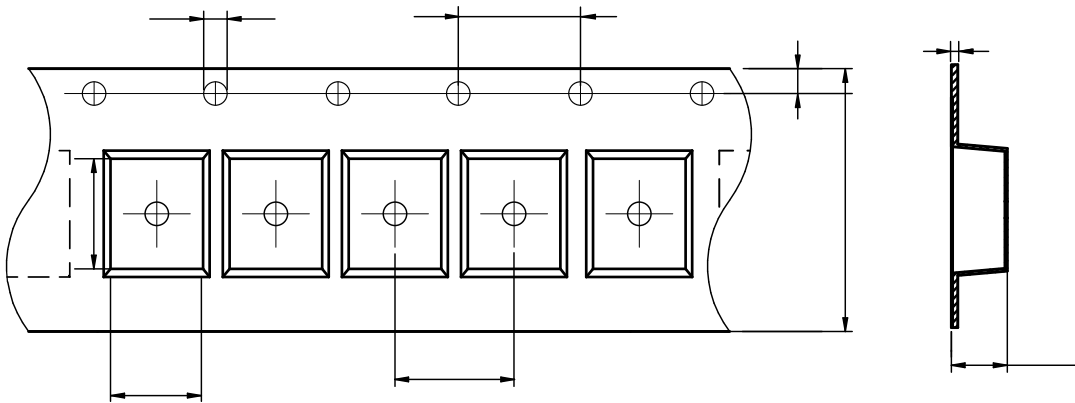




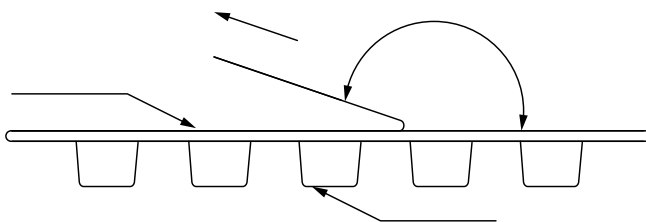


c
c
c

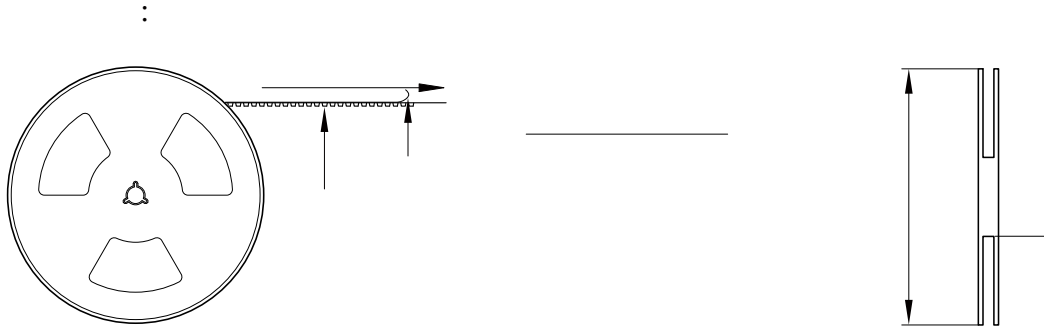
:



| | | | | | | | | | |
|----------|-----------|-----------|---------|---------|---------|---------|-----------|----------|-----------|
| | | | | | | | | | |
| FBHA0805 | 1.30±0.05 | 2.10±0.05 | 1.5±0.1 | 4.0±0.1 | 4.0±0.1 | 8.0±0.3 | 0.95±0.05 | 1.75±0.1 | 0.95±0.05 |



The peel force of top cover tape shall be between 0.14 to 0.58 N



:

-
-
-
-
-
-
-
-
-